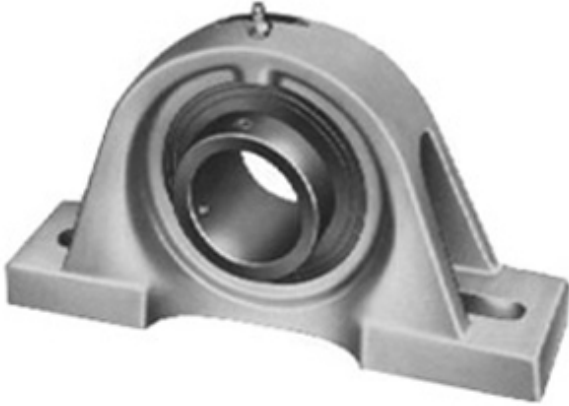




NTN BEARING MFG.CORP

2.438 Inch | 61.925 Millimeter x 2.75 Inch | 69.85 Millimeter x 3.125 Inch | 79.38 Millimeter
SEALMASTER SPM-39 CXU Pillow Block Bearings



Bearing No. SPM-39 CXU

SPM-39 CXU Bearing 2D drawings and 3D CAD models

Category	Pillow Block Bearings
Inventory	0.0
Manufacturer Name	REGAL BELOIT
Minimum Buy Quantity	N/A
Weight	9.13
EAN	0662461008164
Product Group	M06110
Number of Mounting Holes	2
Mounting Method	Set Screw
Housing Style	2 Bolt Pillow Block
Rolling Element	Ball Bearing
Housing Material	Cast Iron
Expansion / Non-expansion	Non-expansion
Mounting Bolts	3/4 Inch
Relubricatable	Yes
Insert Part Number	3-27-CXU
Seals	Felt Labyrinth
Housing Configuration	1 Piece Solid
Inch - Metric	Inch
Other Features	Single Row Medium Duty Air Handling Duty Has Flinger
Long Description	2 Bolt Pillow Block; 2-7/16" Bore; 3-1/8" Base to Center Height; Set Screw Mount;



NTN BEARING MFG.CORP

	Ball Bearing; 7-7/8" Minimum Bolt Spacing; 9-3/8" Bolt Spacing Maximum; Relubricatable; Cast Iron;
Category	Pillow Block
UNSPSC	31171511
Harmonized Tariff Code	8483.20.40.40
Noun	Bearing
Keyword String	Pillow Block
Manufacturer URL	http://www.emerson-ept.com
Manufacturer Item Number	SPM-39 CXU
Manufacturer Internal Number	700989
Weight / LBS	20.1
d	2.438 Inch 61.925 Millimeter
Actual Bolt Center to Center	0 Inch 0Millimeter
D	2.75 Inch 69.85 Millimeter
B	3.125 Inch 79.38 Millimeter
Bolt Spacing Minimum	7.875 Inch 200.025Millimeter
Bolt Spacing Maximum	9.375 Inch 238.125Millimeter
Nominal Bolt Center to Center	8.6 Inch 218.4 Millimeter