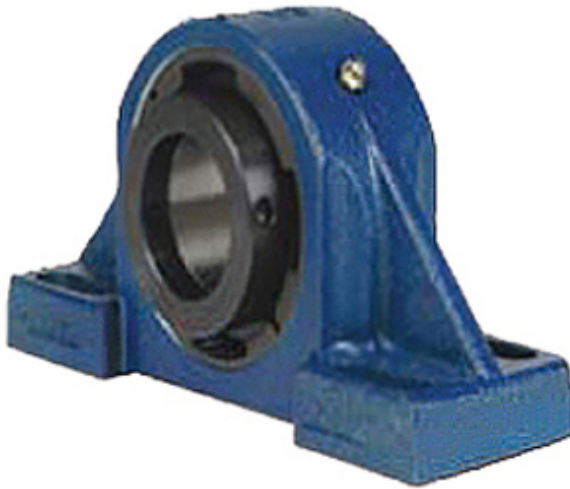




NTN BEARING MFG.CORP

3.937 Inch | 100 Millimeter x 4.59 Inch | 116.586 Millimeter x 5 Inch | 127 Millimeter QM INDUSTRIES QMPX20J100SEB Pillow Block Bearings



Bearing No. QMPX20J100SEB

QMPX20J100SEB Bearing 2D drawings and 3D CAD models

Category	Pillow Block Bearings
Inventory	0.0
Manufacturer Name	TIMKEN
Minimum Buy Quantity	N/A
Weight	25.878
EAN	0883450094252
Product Group	M06288
Number of Mounting Holes	4
Mounting Method	Eccentric Collar
Housing Style	4 Bolt Pillow Block
Rolling Element	Spherical Roller Bearing
Housing Material	Cast Steel
Expansion / Non-expansion	Expansion
Mounting Bolts	7/8 Inch
Relubricatable	Yes
Insert Part Number	22220
Seals	Double Lip Nitrile Rubber
Housing Configuration	1 Piece Solid
Inch - Metric	Metric
Other Features	Double Row
Long Description	4 Bolt Pillow Block; 100MM Bore; 127MM Base to Center Height; Eccentric Collar Mount; Spherical Roller Bearing; 317.5MM



NTN BEARING MFG.CORP

	Minimum Bolt Spacing; 355.6MM Bolt Spacing Maximum; Relubricatable; Cast Steel;
Category	Pillow Block
UNSPSC	31171511
Harmonized Tariff Code	8483.20.40.80
Noun	Bearing
Keyword String	Pillow Block
Manufacturer URL	http://www.qmbearings.com
Manufacturer Item Number	QMPX20J100SEB
Weight / LBS	67
Bolt Spacing Maximum	14 Inch 355.6Millimeter
D	4.59 Inch 116.586 Millimeter
B	5 Inch 127 Millimeter
d	3.937 Inch 100 Millimeter
Nominal Bolt Center to Center	13.3 Inch 336.8 Millimeter
Bolt Spacing Minimum	12.5 Inch 317.5Millimeter
Actual Bolt Center to Center	0 Inch 0Millimeter